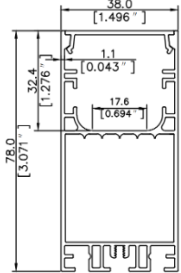
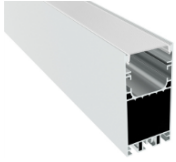


BAR 38



Mounting Clips



Features:

BAR 38 Linear Extruded Aluminum Profile with highest standard 6063-T6 aluminium , deep anodizing (more than 12µm) that protects against corrosion and extends durability , Matt surface treatment .

PMMA Matt Diffuser / Micro Prismatic Lens / Prism Lens + Optics Diffusion sheet, all diffusers and lens are UV stabilized, no inclusions or scratches on the surface.

Continuous Seamless diffuser upto 30mm length.

Standard Length with Zaghera Linear Modules 570 mm / 1200 mm/ 1480 mm/ 1920 mm , tailored length can be manufactured as per design .

Homogenous, well-balanced light dispersing with no shadow.

Technical Specifications:

Input Voltage : 220- 240 V AC, 50 Hz.

Wattage / M : 20 - 60 W

Dimension : W38*H78MM

Efficacy : 100lm/w

Material : 6063 T6 Aluminum + PMMA

3 STEP Mac Adam

High Efficiency , Low Flicker Driver

Lamp Type : Linear SMD Rigid Module

Light Source: 17.6MM Led Strip / PCB Board

Operating Temperature: -20°C to 45°C

Glow Wire Test 850° C

Warranty : 5 Years

Life Time : 50,000hrs at ta 25°C (L80/B10)

Lens Options: 1.PMMA Matt Diffuser

2.Microprismatic Lens

3.Prism Lens + Diffusion sheet

Fields of Application:

Retail	Conference rooms
Education	Counters
Galleries hotels	Restaurants
Living spaces	Healthcare

Installation Method:

Surface / Suspended.

Wattage(W)	20	35	45	60		
Finish	White(W)	Black(B)	Sliver (S)	Customized		
Kelvin*	2700K	3000K	4000K	5000K	5700K	Tunable
Beam Angle	120°					
CRI	80+		90+			
Driver	ON/OFF	0/1-10V	DALI	Phase Dimming	Bluetooth	*Special Color & Finish on request

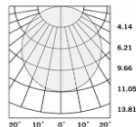
Product Code (974387860):

Wattage	Lumens(lm)	Dimension(W XH) mm	Dimension (L) mm
20	2000 LM	38x78	990
35	3500 LM	38x78	1200
45	4500 LM	38x78	1480
60	6000 LM	38x78	1970

*Luminous flux value is calculated for 4000K CRI>80

* Length and Wattage can be customized as per design

Photometric:



Standards

- EN 60598-1
- EN 60598-2-2
- EN 60598-2-22
- EN 60598-3-2
- EN 60598-3-3

Order Code Ex: 974387860 27K 120D 8 1 W

CCT	Beam Angle	CRI	Driver	Finish
27K - 2700K	120D - 120°	8->80	1 - ON/OFF	W-White
30K - 3000K		9->90	2 - 0/1-10V	B-Black
40K - 4000K			3 - DALI	S-Sliver
50K - 5000K			4 - Phase Dimming	C-Customized
57K - 5700K			5 - Bluetooth	
TuK - Tunable				

Pluxb luminaires are developed with globally recognized and tested components suppliers, however as per international standards tolerance in initial flux and connected load is at ±5%. Unless stated otherwise, the values apply to an ambient temperature of 25°C